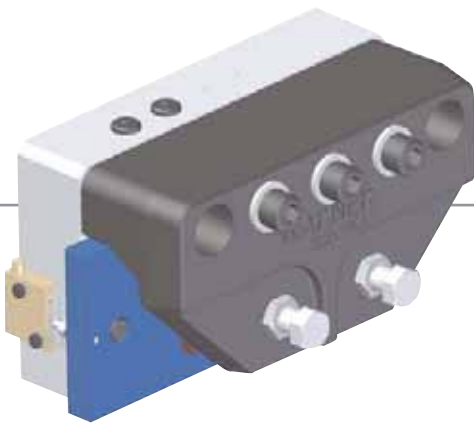




ERS VAR11-02

Electrically Released brake for Elevators



High modular braking system for modern elevator concept

The ERS VAR11-02 is an electrically released failsafe caliper brake that is particularly suitable for flat gearless motors. The VAR11-02 operates in static and/or emergency stops.

Elevator Applications

- ◆ Gearless motors
- ◆ Gear motors

Warner Electric is a world leader in the design and manufacturing of Electrically Released Brakes for the elevator market.

We offer a full range of brakes and specialize in customized solutions to meet your specific performance and installation requirements.

We have over 60 years of experience delivering high technology, cost effective braking systems. We offer production, engineering and application support from our facilities in Europe, Asia and U.S.A. Our engineers, factories and extensive sales network are at your service.

- ◆ Torque according to disc diameter and number of calipers
- ◆ Floating magnet and fixed disc
- ◆ EC 95/16 certified
- ◆ Hand release on request
- ◆ Redundancy capability according EN81-1 when two or more brakes are used
- ◆ Overexcitation or monotension voltage
- ◆ Microswitch equipped upon request
- ◆ Nearly maintenance free (further information in our service manual)
- ◆ No airgap adjustment required

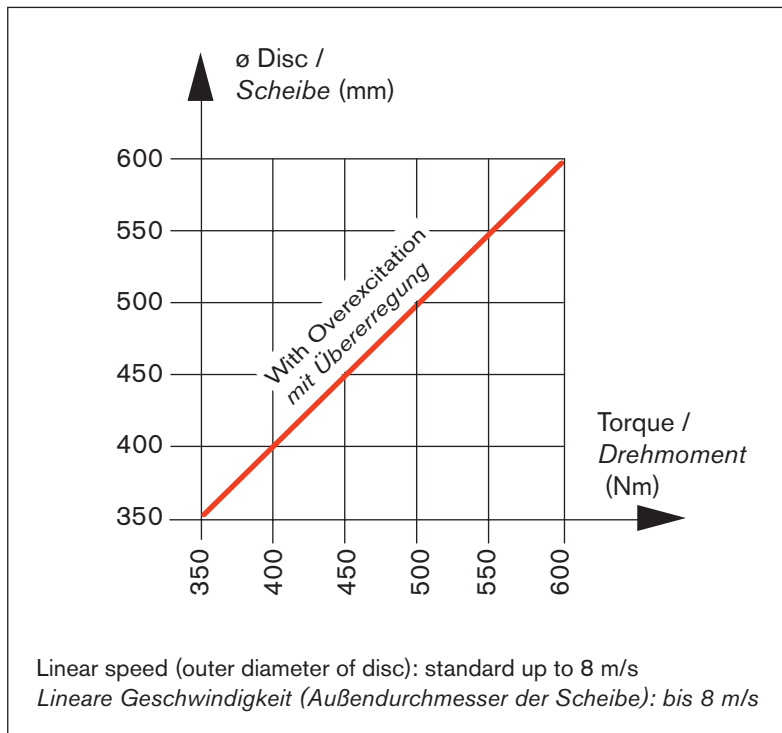


Industrie Service





ERS VAR11-02



Voltage / Spannung (VDC)

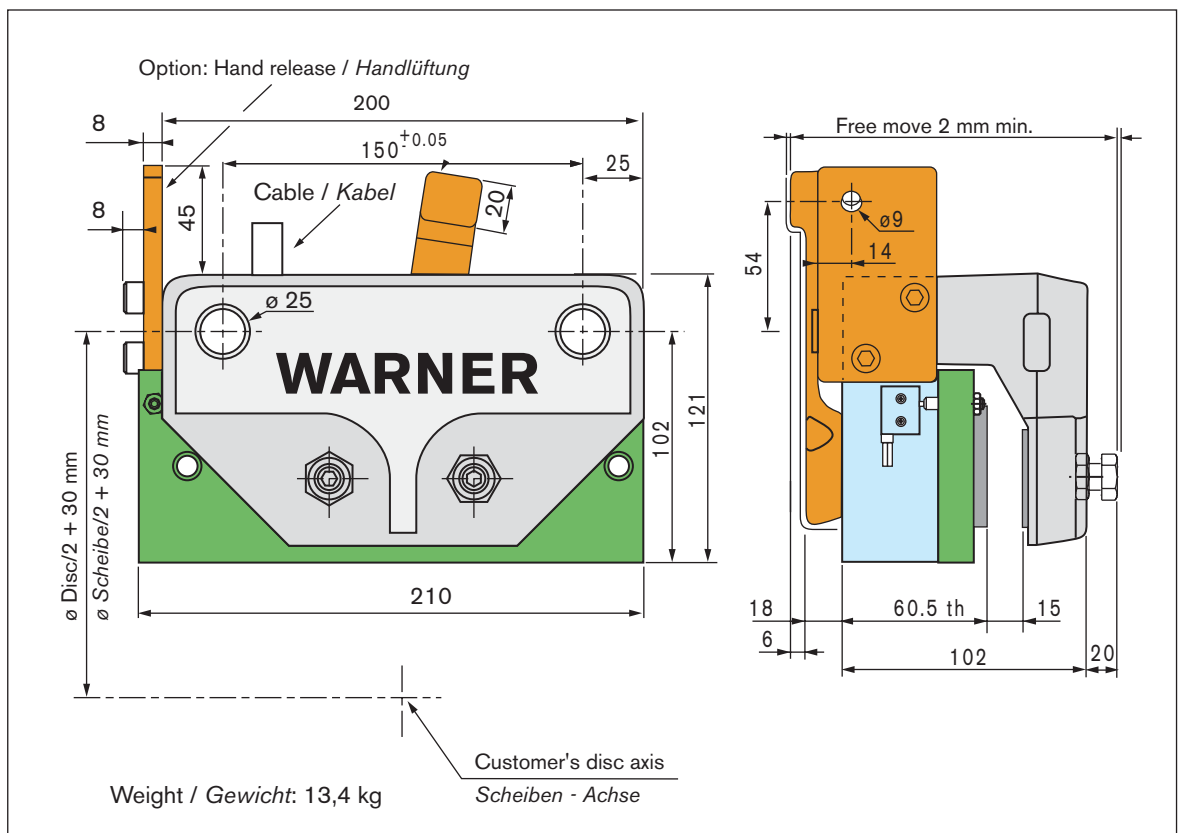
With Overexcitation Mit Übererregung	
Holding voltage Haltespannung	Overex. voltage Übererregung
24	48
52	103
103*	207*
ED = 60 %	

* Not available now

* **Zur Zeit nicht lieferbar**

Tolerances on the supply voltage at the brake terminals +5% / -10% (NF C 79-300).

Die Spannungstoleranz an der Anschlussklemme der Bremse beträgt +5% / -10% (NF C 79-300).



WARNER ELECTRIC EUROPE

Rue Champfleür, B.P 20095, F- 49182 St Barthélemy d'Anjou Cedex

Tél. +33 (0)2 41 21 24 24, Fax + 33 (0)2 41 21 24 00 - www.warnerelectric-eu.com